

City of Regina

The Towns Development - Horizon Station Park 2024 Public Art Installation

Application Deadline: March 4, 2024

Project Completion Deadline: October 11, 2024

The City of Regina acknowledges we are on the traditional lands of the Treaty 4 Territory, a Treaty signed with 35 First Nations across Southern Saskatchewan and parts of Alberta and Manitoba, and the original lands of the Cree, Saulteaux, Dakota, Nakota, Lakota, and the homeland of the Métis.

The City of Regina owes its strength and vibrancy to these lands and the diverse Indigenous Peoples whose ancestors' footsteps have marked this territory, as well as settlers from around the world who continue to be welcomed here and call Regina home.

The City of Regina is looking to receive proposals for an art installation within the newly developed community of The Towns in southeast Regina.

Project Background

In Saskatchewan, there is a distinct relationship between the railways and small communities. The railways relied on towns that settled along its path for services, bringing economic opportunities and growth to adjacent communities. The railroad was a vital mode of transportation and connection in the Prairies, bringing with it new immigrants and helping to create the diverse cultural community that resides in Saskatchewan today. However, the development of railways also created a legacy of harm. As lands were cleared, Indigenous life was disrupted and changed forever through displacement. Railways were also used to transport Canadians labelled “enemy aliens” during both world wars, and Chinese labourers working for the railroad experienced horrendous working conditions, exploitation, and discrimination. Later, as fewer passengers chose to travel by train, railways were abandoned, causing hardship for communities that relied on them. Horizon Station Park is named after a former village in southern Saskatchewan that was impacted by the railway abandonment. This park endeavours to acknowledge the impacts of the railways in Saskatchewan, providing an opportunity to tell the story of the rise and fall of train culture and its legacies in Saskatchewan.

The Artwork

The City of Regina invites practicing artists to submit proposals for the creation of a new, original public artwork exploring the theme of railways in Saskatchewan, for installation in Horizon Station Park, Regina.

The intention of this commission is to respond to and explore the complex histories relating to the development and legacies of Saskatchewan's railroads. In particular, the artwork should reflect on the underrepresented stories of the railways and acknowledge difficult truths related to the collision of cultures it contributed to.

The objective of the Horizon Station Park is to provide year-round active recreation with an outdoor skating rink, dog park, basketball nets, skating and walking loop, train themed playground and more. The artwork should elevate the space in the winter as well as during the warmer seasons. Ideally, it will incorporate lighting to provide a safe and inviting area within the park in the evening and throughout the winter.

Project Information

- The proposed budget for this project is \$200,000, which includes artist fees, all materials and artwork design.
- Elements such as electrical rough-ins, structural (piles/foundations) and limited installation support will be provided by the Towns Development.
- This call is open to mid-career and established artists, or artist led groups in Canada.
- Preference will be given to artists with ties to Treaty 4 Territory.
- Delivery date for this project is October 11, 2024.

Location:

The area in Horizon Station Park under consideration for the installation is located in and around the skating and walking loop (See map in Appendix A). The loop is a 3.0 metre-wide pathway that is converted to a leisure skating loop in the winter season. There are two accessible picnic tables located along this loop, along with two areas of bench seating. You can visit the space in the 360 aerial tour [here](#).

Technical Aspects:

- All artwork elements must have a 2.0 metre offset from the edge of the pathway to accommodate snow clearing (See map in Appendix A).
- The artwork must be durable and able to withstand extreme year-round Saskatchewan weather conditions. This includes rain, snow, strong wind and high ultraviolet light exposure.
- The artwork must be safe and accessible for public use in an unsupervised park system and not cause permanent damage to existing structures. Artists should be aware that while the artwork is located in a public area it will therefore be at risk of vandalism.
- The artwork should activate the space and be accessible to all patrons of the park.
- If lighting is included in the artwork design, a light distribution map is required for proposed elements (see map in Appendix B). Lighting is encouraged in the south portion of the loop.
- All decorative and architectural finishes must be designed by the artist or artist led team.
- The artist is to lead the design and manufacturing process for the artwork's production.
- The Towns Development has contracted limited services for the following engineering and construction work if required.

Stantec (engineering firm) will complete the following:

- Engineer will complete design drawings in coordination with the artist for structural pile/foundations and electrical elements and provide Engineer of Record Seal. This does not include engineering the art piece or anchoring the art piece to the pile/foundation.
- If the artist prefers to provide their own engineering services, the proposal must include clear intentions. All engineers must be licensed to practice in Saskatchewan.

A General Contractor (GC) will complete the following:

- Installation of the electrical service leading to the artwork and structural concrete base, if required.

Proposal Information

All proposals shall include the following:

1. A statement of intent, either:

Letter of intent – not exceeding a total of 1200 words

– OR –

Video of intent – not exceeding a total of 15 minutes

Statements of intent or video of intent should include the following information:

- An artwork statement, including information describing your interest in the project and concept.
- Information about the medium and scale of the proposed artwork.
- A description of how the project will interact or engage the viewer according to the project's stated objectives and theme(s).
- Artist statement and biography including your connections and relationship to Regina and Treaty Four territory, relevant accomplishments, and experiences with similar projects, where applicable.

And:

2. CV (include all relevant team members).
3. A separate folder with up to six (6) examples of existing work for review and consideration.
4. Estimated cost of the work and proposed budget.
5. Project schedule from concept to final installation.

To ensure our public spaces, reflect the diversity of our community, and to encourage opportunities for those who may experience oppression and/or exclusion, please indicate if you belong to any equity-seeking groups (Indigenous, ethnocultural minorities, 2SLGBTQIAP+, disability, etc.).

Proposals shall not:

- Include design elements that feature advertisements or promotions for commercial businesses or products.

- Include design elements that are discriminatory or include profanity or otherwise offensive content.
- Include design elements that breach intellectual property or trademarks.

The City of Regina will not support submissions that engage in cultural misappropriation (sometimes known as appropriation) and prioritizes artwork that reflects the artists' own culture(s).

Cultural misappropriation is the deliberate or accidental borrowing from a culture that is not your own without respect, understanding or permission. This may include cultural practices or objects, music, stories, ceremonies or imagery.

Additional information and resources can be found at: [CARFAC Indigenous Protocols for the Visual Arts](#).

Selection Process

Applicants will be shortlisted, and the top applicants will be invited to an interview with the Adjudication Panel and present a rendering or maquette of the final piece.

Shortlisted artists or artist-led teams will also be requested to provide a plan for installation and long-term maintenance of the proposed artwork.

An honorarium for proposal development will be extended to the shortlisted artists/teams.

Shortlisted applicants will be notified by March 15, 2024.

Only shortlisted applicants will be notified.

Application Submission

Applications should be submitted via e-mail to The City of Regina at kursu@regina.ca.

Deadline for proposal submission: March 4, 2024 at 4:00 p.m. CST. Late or incomplete submissions will not be accepted.

Submissions will be adjudicated by local arts experts & professionals, from the City's independent Arts & Culture Sector Reference Group.

For more information or questions related to the call please contact Kelsey Ursu at kursu@regina.ca.



Stantec Consulting Ltd.
400 - 1820 Hamilton Street
Regina SK S4P 2B8
Tel: (306) 781-6400
www.stantec.com

Copyright Reserved
The Contractor shall verify and be responsible for all dimensions. DO NOT scale the drawing - any errors or omissions shall be reported to Stantec without delay.
The Copyrights to all designs and drawings are the property of Stantec. Reproduction or use for any purpose other than that authorized by Stantec is forbidden.

Utility Disclaimer
Location of existing utilities as shown may not be exact or may be incomplete. Contractor to verify exact location of all utilities with appropriate authorities prior to starting construction.
The developer and the consultant assume no responsibility for any utilities damaged during construction.

Legend

	ASPHALT PATHWAY
	CONCRETE SIDEWALK/SEATING AREA
	PLAYGROUND MULCH/RUBBER SURFACE
	IRRIGATED SOD
	PARKER PICNIC TABLE
	PARKER ACCESSIBLE PICNIC TABLE
	PARKER BENCH
	PARKER BACKLESS BENCH
	TRASH RECEPTACLE
	DOG PARK FENCE
	CONTOUR - MAJOR 1.0m
	CONTOUR - MINOR 0.25 m OR 0.5m
	MANHOLE (NIC)
	MANHOLE/ CATCH BASIN (NIC)
	CATCH BASIN (NIC)
	STORM LINE (NIC)
	WINTER HYDRANT (NIC)
	WATER LINE (NIC)

- Notes**
- SEE L-3 MATERIALS PAGE FOR FULL LIST OF QUANTITIES.
 - REFER TO L-6 FOR FULL PLAN LAYOUT.

ISSUED FOR RECORD DRAWING	SW	BW	2022.08.18
Issued	By	App'd	YYYY.MM.DD
File Name: REC_113101775_1_TOWNS_MR-4	SW	BW	2018.07.13
	Dwn.	Dsgn.	Chkd.
			YYYY.MM.DD

Permit/Seal

RECORD DRAWING

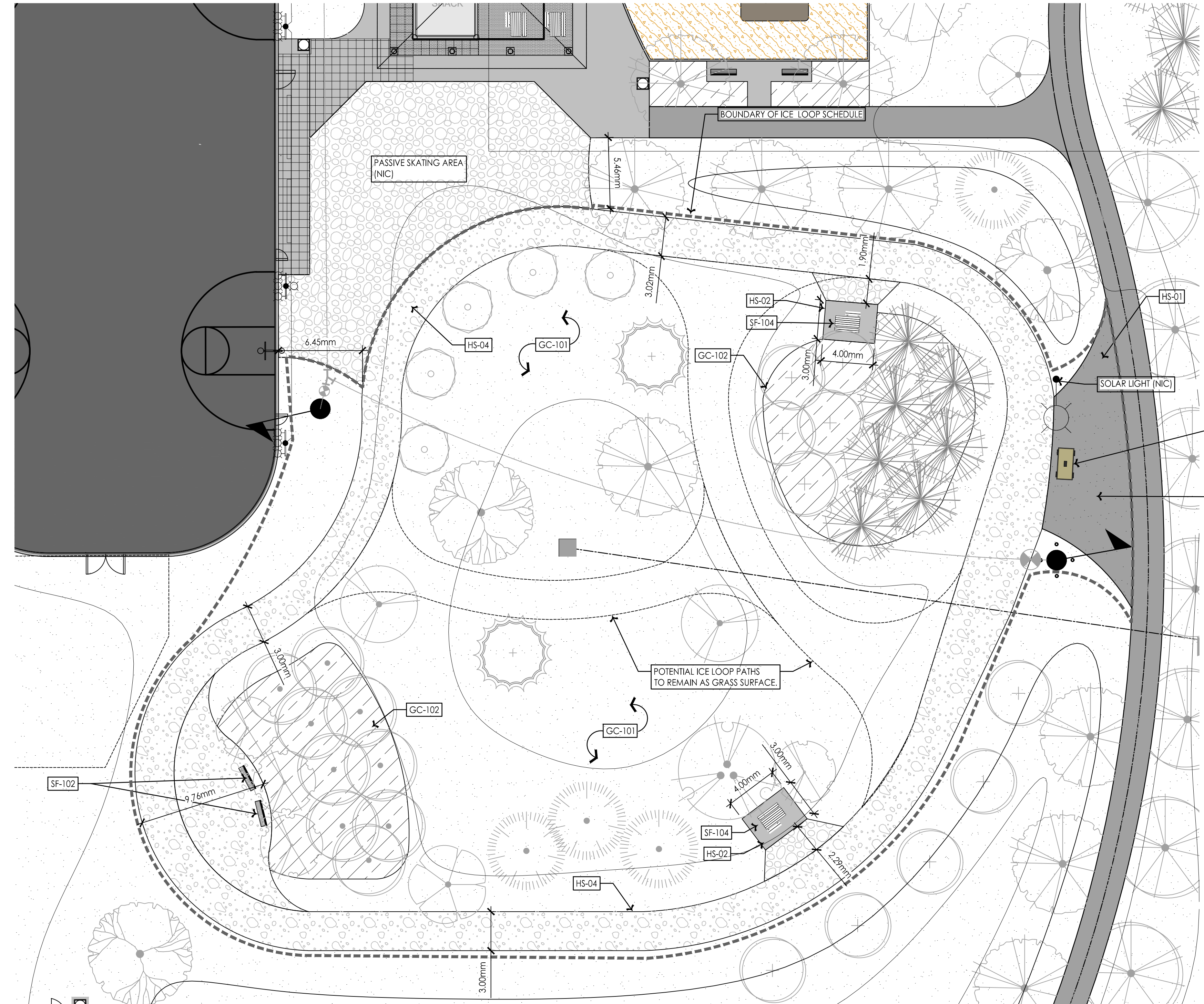
Client/Project
TERRA DEVELOPMENTS INC.
THE TOWNS SUBDIVISION
PHASE 1 STAGE 1H
LANDSCAPE SERVICES
Regina, Saskatchewan

Title
MUNICIPAL RESERVE 4 (MR-4)
ICE LOOP BLOW-UP

Project No. 1131-01775	Scale 1:200
Revision Sheet 0 15 of 20	Drawing No. L-15

SCHEDULE L-15 ICE LOOP

SYMBOL	GROUND COVER DESCRIPTION	QTY	DETAIL
GC-101	SOD REFER TO CITY OF REGINA STANDARD CONSTRUCTION SPECIFICATIONS SECTION 02938 SODDING SOD TO BE KENTUCKY BLUE GRASS/ FESCUE MIX (MIN. 60% KENTUCKY BLUE GRASS)	1,845 m ²	-
GC-102	PLANTING BED MULCH - 100MM DEPTH REFER TO CITY OF REGINA STANDARD CONSTRUCTION SPECIFICATIONS SECTION 02496 WOOD FIBRE MULCH	397.6 m ²	-
SYMBOL	HARDSCAPING DESCRIPTION	QTY	DETAIL
HS-01	2.4M ASPHALT PATHWAY - TYPE A REFER TO CITY OF REGINA STANDARD CONSTRUCTION SPECIFICATIONS SECTION 02509 TYPE A - ASPHALT PATHWAY, DETAIL LS-6A	93.8 m ²	5/L-19
HS-02	CONCRETE SIDEWALK/ SEATING AREA	24.0 m ²	2/L-19
HS-04	3.0M WIDTH CRUSHER DUST ICE LOOP - 100MM DEPTH	708.1 m ²	1/L-19
SYMBOL	SITE FURNISHINGS DESCRIPTION	QTY	DETAIL
SF-102	WISHBONE PARKER BENCH	2	2/L-18
SF-104	WISHBONE PARKER ACCESSIBLE PICNIC TABLE	2	5/L-18



1 ICE LOOP LAYOUT
L-15 1:200

Buckingham Drive



Multi-Purpose Athletic Field

Warm Up Shack/
Picnic Shelter

Playground

Outdoor Ice Rink with Basketball Courts

Passive Skating/Games Area

Skating Loop/
Walking Loop

Picnic Area

Off Leash Dog Park

Asphalt Pathway

Passive Play Area

Keller Avenue

Copyright Reserved

The Contractor shall verify and be responsible for all dimensions. DO NOT scale the drawing - any errors or omissions shall be reported to Stantec without delay. The Copyrights to all designs and drawings are the property of Stantec. Reproduction or use for any purpose other than that authorized by Stantec is forbidden.

Utility Disclaimer

Location of existing utilities as shown may not be exact or may be incomplete. Contractor to verify exact location of all utilities with appropriate authorities prior to starting construction. The developer and the consultant assume no responsibility for any utilities damaged during construction.

Legend

- ASPHALT PATHWAY
- CONCRETE SIDEWALK/SEATING AREA
- PLAYGROUND FIBAR/RUBBER SURFACE
- CRUSHER DUST SURFACING
- IRRIGATED SOD
- PLANT BED WITH WOOD FIBRE MULCH
- PARKER PICNIC TABLE
- PARKER ACCESSIBLE PICNIC TABLE
- PARKER BENCH
- PARKER BACKLESS BENCH
- TRASH RECEPTACLE
- REAR LOT FENCE (NIC)
- DOG PARK FENCE
- CONTOUR - MAJOR 1.0m
- CONTOUR - MINOR 0.25 m OR 0.5m
- MANHOLE (NIC)
- MANHOLE/ CATCH BASIN (NIC)
- CATCH BASIN (NIC)
- STORM LINE (NIC)
- WINTER HYDRANT (NIC)
- WATER LINE (NIC)
- RINK LIGHTING (NIC)

Notes

- REFER TO L-4 FOR LAYOUT OVERVIEW
- REFER TO L-4 FOR ELEMENTS INCLUDED IN SERVICING AGREEMENT.

ISSUED FOR RECORD DRAWING	SW	BW	2022.08.18
Issued	By	App'd	YYYY.MM.DD

File Name: REC_113101775_1_TOWNS_MR-4	SW	BW	BW	2018.07.13
	Dwn.	Dgn.	Chkd.	YYYY.MM.DD

Permit/Seal

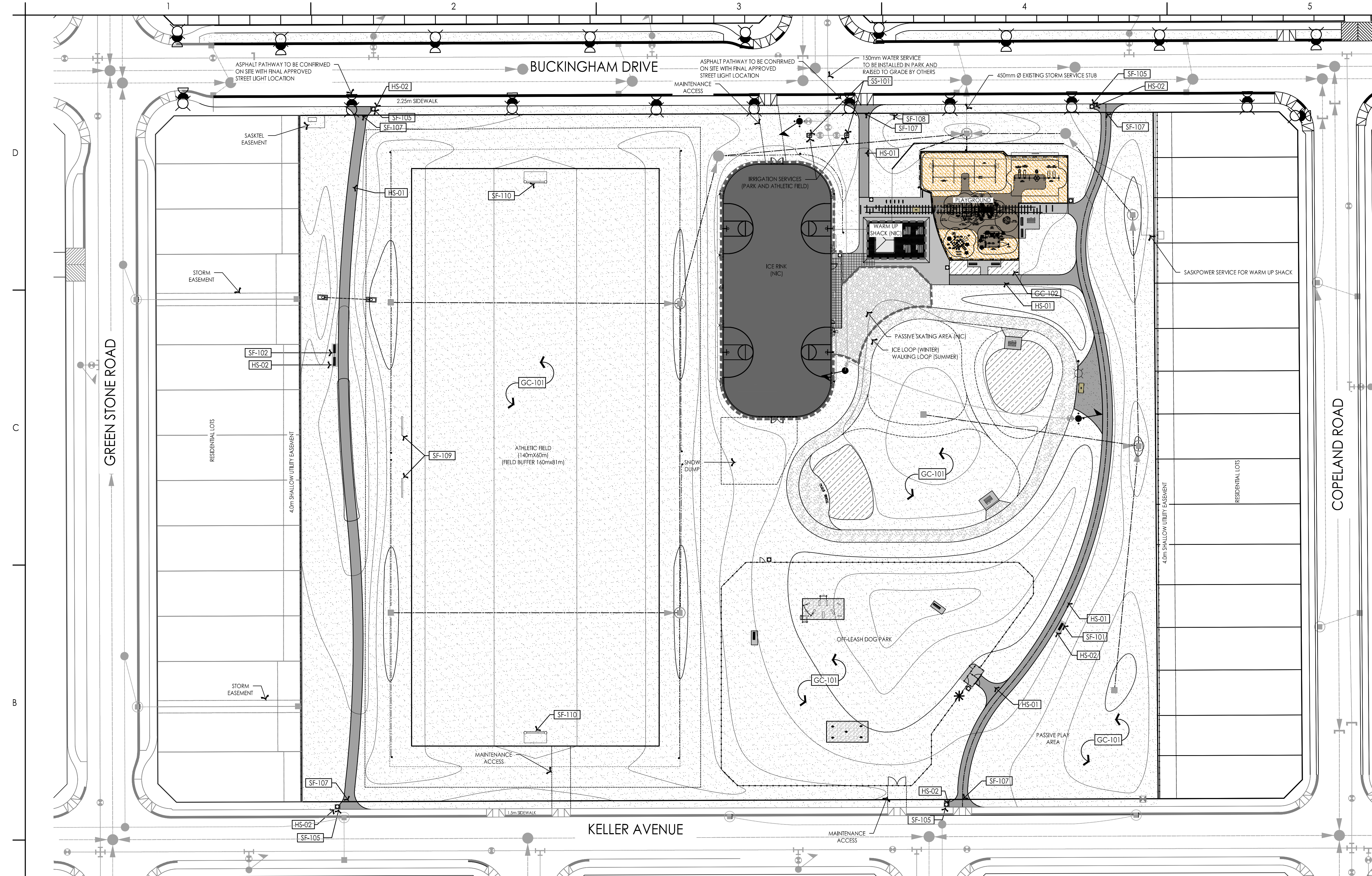
RECORD DRAWING

Client/Project
TERRA DEVELOPMENTS INC.
THE TOWNS SUBDIVISION
PHASE 1 STAGE 1H
LANDSCAPE SERVICES
Regina, Saskatchewan

Title
MUNICIPAL RESERVE 4 (MR-4)
LAYOUT PLAN

Project No. 1131-01775	Scale 1:500
---------------------------	----------------

Revision Sheet 0 6 of 20	Drawing No. L-6
-----------------------------	--------------------



FENCING SCHEDULE

SYMBOL	DESCRIPTION
FN-101	1.2M HT. BLACK CHAIN LINK FENCE REFER TO CITY OF REGINA STANDARD CONSTRUCTION SPECIFICATIONS DETAIL UA-1A
FN-102	1.2M WIDE GATE - BLACK CHAIN LINK FENCE REFER TO CITY OF REGINA STANDARD CONSTRUCTION SPECIFICATIONS DETAIL UA-1B
FN-103	1.2M HT. X 3.66M WIDE DOUBLE SWING BLACK CHAIN LINK MAINTENANCE GATE REFER TO CITY OF REGINA STANDARD CONSTRUCTION SPECIFICATIONS DETAIL UA-1B

GROUND COVER SCHEDULE

SYMBOL	DESCRIPTION
GC-101	SOD REFER TO CITY OF REGINA STANDARD CONSTRUCTION SPECIFICATIONS SECTION 02938 SODDING SOD TO BE KENTUCKY BLUE GRASS/ FESCUE MIX (MIN. 60% KENTUCKY BLUE GRASS)
GC-102	PLANTING BED MULCH - 100MM DEPTH REFER TO CITY OF REGINA STANDARD CONSTRUCTION SPECIFICATIONS SECTION 02496 WOOD FIBRE MULCH

HARDSCAPING SCHEDULE

SYMBOL	DESCRIPTION
HS-01	2.4M ASPHALT PATHWAY - TYPE A REFER TO CITY OF REGINA STANDARD CONSTRUCTION SPECIFICATIONS SECTION 02059 TYPE A - ASPHALT PATHWAY, DETAIL LS-6A
HS-02	CONCRETE SIDEWALK/ SEATING AREA
HS-03	CONCRETE EDGE FOR PLAYGROUND PLAY AREA - 150MM WIDE
HS-04	3.0M WIDTH CRUSHER DUST ICE LOOP - 100MM DEPTH
HS-05	PLAYSURFACING - 300MM DEPTH FIBAR
HS-06	PLAYSURFACING (POURED-IN-PLACE) PREP BASE MATERIAL. INSTALL RUBBER FX PLAYGROUND SURFACING SURFACE TO COMPLY WITH ALL CSA Z614 STANDARDS FOR PLAYGROUND ATTENUATION, HIC AND CMAX TESTING FOR CRITICAL FALL HEIGHTS. COLOUR: BLACK AND GREY MIXED WITH GREY PAINTED RAILS, BROWN III 50/50% BLACK/BROWN MIXED ON PATHS TO ZIPKROOZ AND SWINGS
HS-07	TRAIN TRACK LINE PAINTING
HS-08	CRUSHER DUST DOG PARK - 100MM DEPTH
HS-09	WOOD EDGER 89X140MM PRESSURE TREATED EDGER WITH 38X89X450MM STAKES @ 2.0V O.C.

SITE FURNISHINGS SCHEDULE

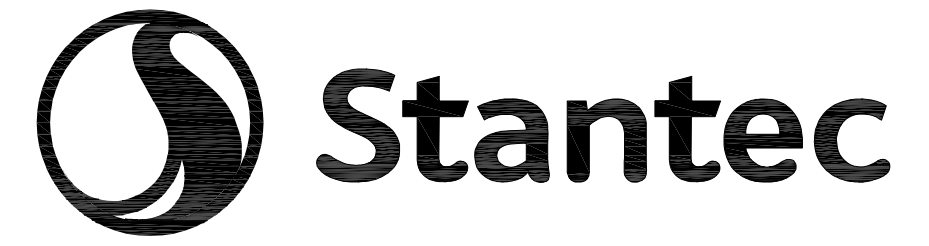
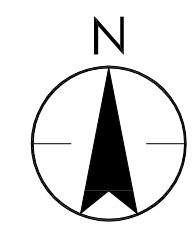
SYMBOL	DESCRIPTION
SF-101	WISHBONE PARKER BACKLESS BENCH
SF-102	WISHBONE PARKER BENCH
SF-103	WISHBONE PARKER LEANING BENCH
SF-104	WISHBONE PARKER ACCESSIBLE PICNIC TABLE
SF-105	WISHBONE MODENA SQUARE TOP WASTE RECEPTACLE
SF-106	WISHBONE PARKER 2 SPACE BIKE RACK
SF-107	REMOVABLE BOLLARD RELIANCE FOUNDRY R-7901 EMBEDDED WITH LID - 4"SS (100MM STAINLESS STEEL)
SF-108	PARK TOWER SIGN
SF-109	PLAYERS BENCH SPORT SYSTEMS IN-GROUND PLAYERS BENCH BL-43-15
SF-110	SCOREMASTER SOCCER NETS SM-DM-1200-2400 SOCCER GOALS
SF-111	RECLAIMED TIRES FOR DOG PARK

SF-112	RECLAIMED HYDRANTS FOR DOG PARK
SF-113	DOG PARK SIGN RULES AND REGULATIONS OF USE

SITE STRUCTURES SCHEDULE

SYMBOL	DESCRIPTION	QTY	DETAIL
SS-101	WATER SERVICE KIOSKS	2	

Appendix B



Stantec Consulting Ltd.
400 - 1820 Hamilton Street
Regina SK S4P 2B8
Tel: (306) 781-6400
www.stantec.com

Copyright Reserved

The Contractor shall verify and be responsible for all dimensions. DO NOT scale the drawing - any errors or omissions shall be reported to Stantec without delay.
The Copyrights to all designs and drawings are the property of Stantec. Reproduction or use for any purpose other than that authorized by Stantec is forbidden.

Utility Disclaimer

Location of existing utilities as shown may not be exact or may be incomplete. Contractor to verify exact location of all utilities with appropriate authorities prior to starting construction. The developer and the consultant assume no responsibility for any utilities damaged during construction.

Legend

- POLE MOUNT LUMINAIRE - REFER TO LUMINAIRE SCHEDULE
OF HEADS AS SHOWN ON DRAWINGS
T/O = TILT / ORIENTATION - REFER TO DETAIL 3/E500R
- PADMOUNT SASKPOWER TRANSFORMER
- 5-20R DUPLEX RECEPTACLE
- PANELBOARD

Notes

1. WARM-UP SHACK LAYOUT AND PANEL SIZE TO BE CONFIRMED AND ARE SHOWN FOR INDICATIVE PURPOSES ONLY. COORDINATE WITH SHACK DESIGN.
2. POLES FOR LUMINAIRES TO BE SET BACK 0.5m FROM RINK BOARDS.
3. GREY LINES AND SYMBOLS INDICATE WORK NOT IN SCOPE.

Key Notes (X)

1. WEATHERPROOF GFCI RECEPTACLES ON RINK SIDE OF LUMINAIRE POLE 1200mm AFS. POWER FEED RUN UP THROUGH POLE.
2. PROVIDE METER SOCKET PER SASKPOWER ELECTRIC SERVICE REQUIREMENTS. CONFIRM EXACT LOCATION WITH SASKPOWER.

Rev	Description	By	Appd	Date
F	RECORD DRAWINGS	ACC	ACC	2023.04.14
E	ISSUED FOR BUILDING PERMIT	ACC	ACC	2021.04.14
D	ISSUED FOR TENDER/PERMIT	ACC	ACC	2021.04.21
C	ISSUED FOR REVIEW	ACC	ACC	2021.03.19
B	ISSUED FOR APPROVAL	ACC	ACC	2021.02.24
A	ISSUED FOR 90% DRAWING REVIEW	ACC	ACC	2020.12.18

Issued By Appd YYYY.MM.DD

File Name	ACC	ACC	IRW	Date
113101775_E-TOWNS_MR-4	ACC	ACC	IRW	2020.12.18

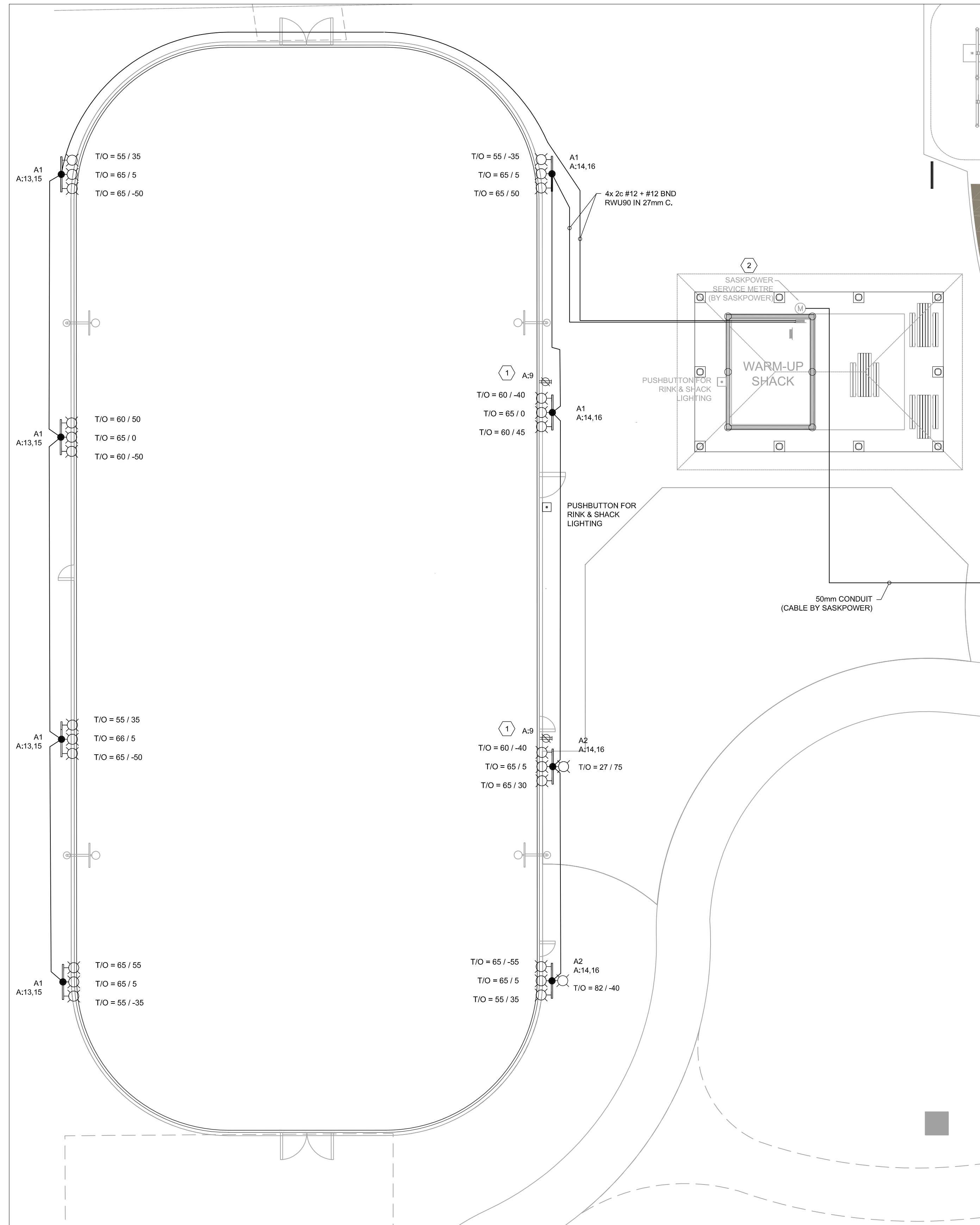
Permit/Seal Dwn. Dsgn. Chkd. YYYY.MM.DD

Client/Project
TERRA DEVELOPMENTS INC.
THE TOWNS SUBDIVISION
MUNICIPAL RESERVE 4 (MR-4)
OUTDOOR ICE RINK
Regina, Saskatchewan

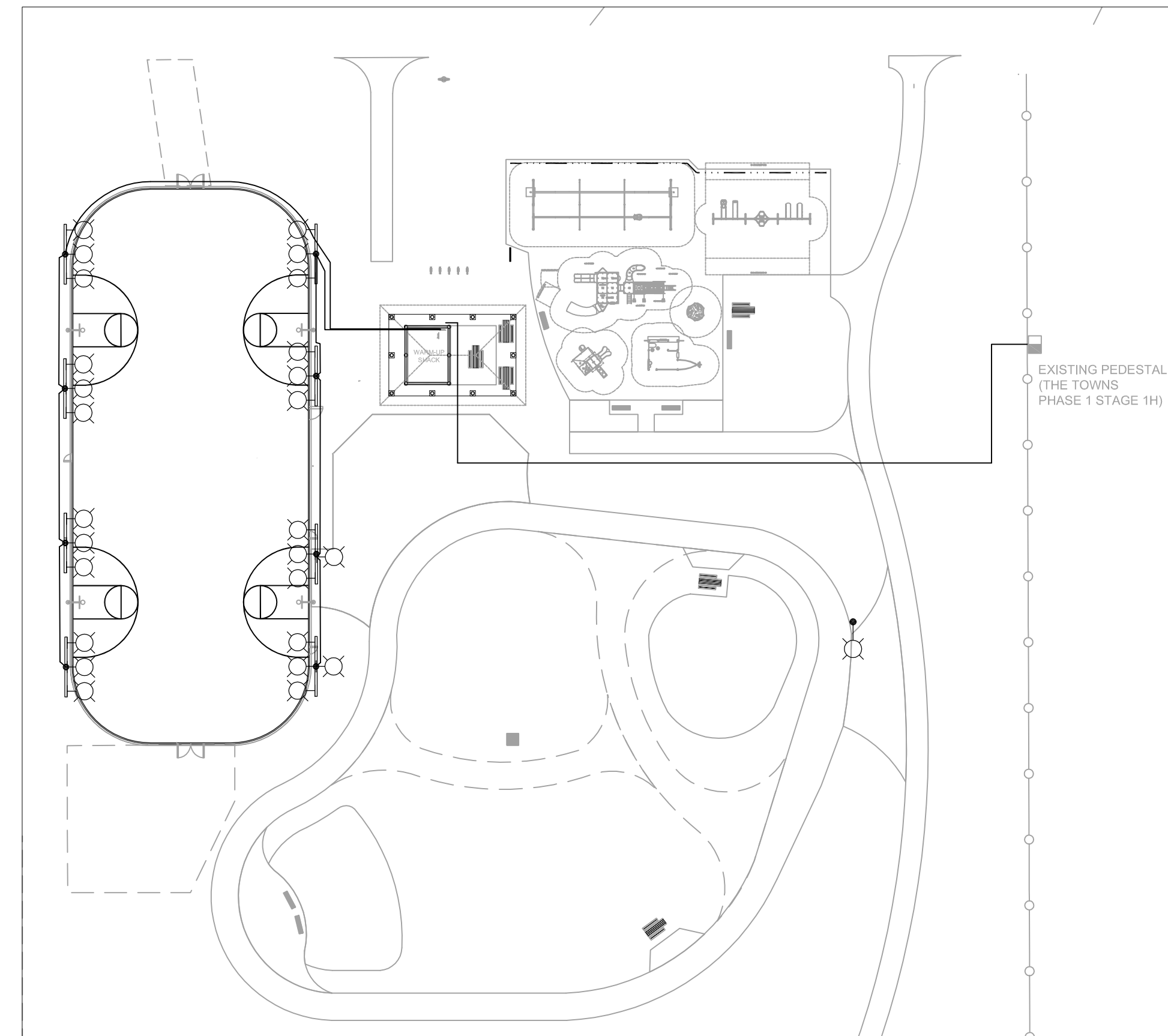
Title
ELECTRICAL PLAN

Project No. 1131-01775 Scale AS NOTED

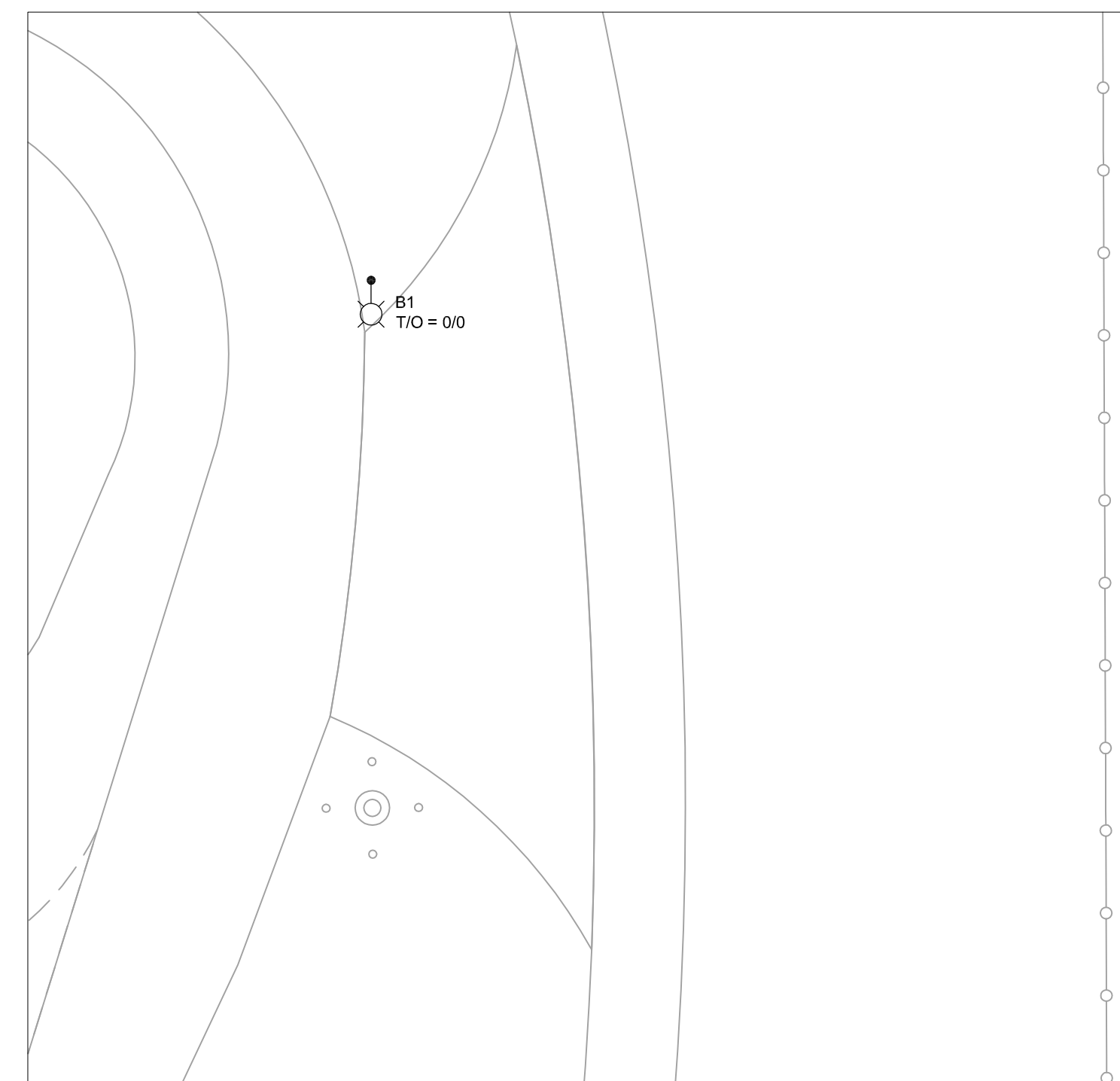
Revision Sheet Drawing No.
F of **E200R**



1 RINK LIGHTING & POWER
E200R 1:150



2 CABLE ROUTING
E200R 1:500



3 MAINTENANCE PAD LIGHTING
E200R 1:150