



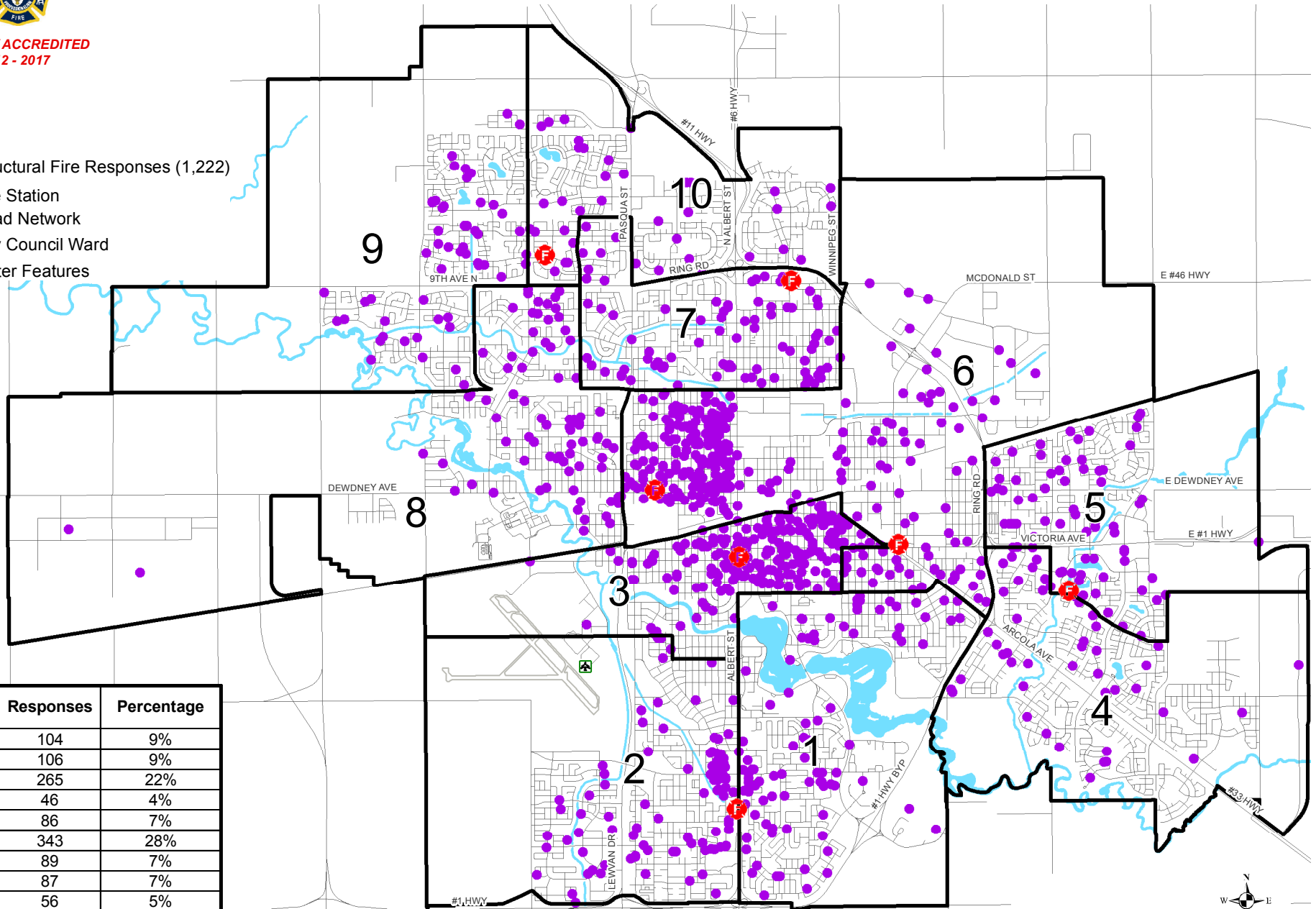
Structural Fire Responses 2012 - 2016

By City Council Wards

INTERNATIONALLY ACCREDITED
AGENCY 2012 - 2017

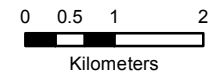
Legend

- - Structural Fire Responses (1,222)
- F - Fire Station
- Road Network
- City Council Ward
- Water Features



City Wards	Responses	Percentage
1	104	9%
2	106	9%
3	265	22%
4	46	4%
5	86	7%
6	343	28%
7	89	7%
8	87	7%
9	56	5%
10	40	3%
Total	1,222	100%

Regina Fire & Protective Services
"Protecting People, Property & the Environment"



January, 2017